



REFLECTING STORIES INTO UNFORGETTABLE MEMORIES BY THE CREEK

OUR STORY

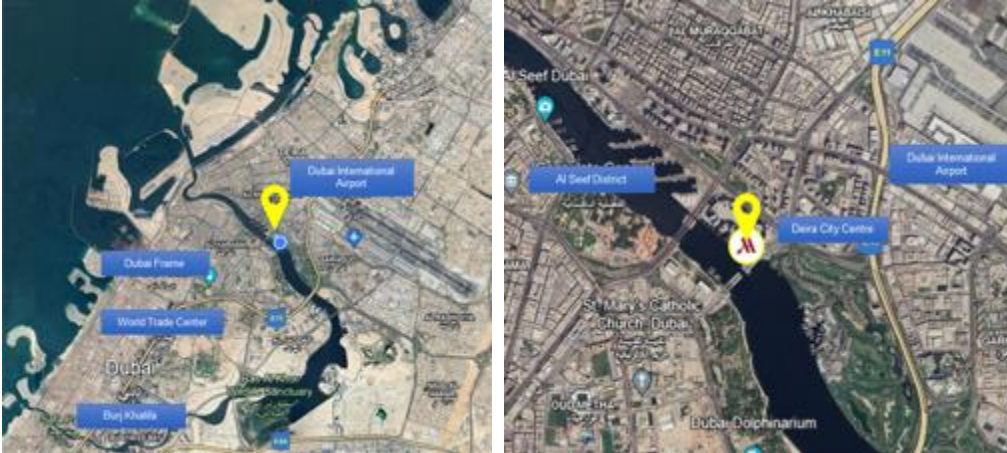
Marriott Marquis Dubai offers a vibrant escape where Modern comfort meets the charm of Dubai Creek, providing authentic connections, thoughtful hospitality, and memorable experiences for travelers and locals alike.

Located in Dubai's latest development 'Jewel of the Creek', Marriott Marquis Dubai is gracefully perched on the historical Dubai Creek offering breathtaking views of the creek and city skyline. The hotel is within proximity to the majority of the city's tourist attractions as well as the financial and shopping hub of Dubai.

Marriott Marquis Dubai as the epicenter of diverse experiences, combining cutting-edge amenities with the rich, historical charm of Dubai. Whether it's world-class dining, top-notch amenities, or vibrant local attractions this Creekside destination is where every moment tells a story, and every experience inspires new journeys.



DESTINATION & HOTEL LOCATION



DISCOVER THE SOUL OF THE CITY IN THE HEART OF DUBAI CREEK

- 📍 Located at the newest destination 'Jewel of the Creek', Port Saeed
- 10 minutes drive from Dubai International Airport
- 15 minutes from Downtown Dubai
- 5 minutes access to City Centre Deira Mall & Metro Station. Shuttle bus to the Mall
- 5-10 minute drive to landmarks and attractions (Dubai Frame, Dubai Gold Souq, Creek Golf Club, Dubai World Trade Center, DIFC)
- Access to Yacht at the Marina



ELEVATE YOUR STAY

ACCOMODATIONS

Discover our 590 newly built rooms, suites and fully equipped apartments that seamlessly blend comfort and functionality. With complimentary WI-FI access and modern amenities, each provides unparalleled comfort. The fusion of modern Arabic interiors and warm earthy tones creates a unique atmosphere.

OUR ROOMS

The Marriott Marquis Dubai consists of 434 hotel rooms.



CITY/CREEK DELUXE ROOM

330 Deluxe Rooms overlooking the city or the creek. 45 - 54 Sq M2, including complimentary tea and coffee making facilities, premium amenities, and a luxurious bathroom.



M CLUB KING

55 M Club King rooms overlooking the city or the creek. 50 - 103 Sq M2, including complimentary tea and coffee making facilities, premium amenities, a luxurious bathroom, and access to the M Club Lounge.



ONE BEDROOM SUITE

33 One-Bedroom Suites overlooking the city or the creek. With 104 - 118 Sq M2, including complimentary tea and coffee making facilities, a spacious living room, premium amenities, and a grand bathroom.

The Marriott Marquis Dubai consists of 434 hotel rooms and suites



TWO BEDROOM SUITE

12 Two-Bedroom suites overlooking the city or the creek. With 159.5 Sq M2, including complimentary tea and coffee making facilities, a spacious living room, premium amenities, and a luxurious bathroom.



EXECUTIVE SUITE

Relax in our exclusive Executive Suite, offering stunning views of the city or creek. Spanning 144-148 sq. m, it includes complimentary tea and coffee-making facilities, a personal bar, a jacuzzi, a spacious living room, premium amenities, and a grand bathroom.

Presidential Suite



PRESIDENTIAL SUITE

The Presidential Suite is the epitome of luxury, offering expansive space, privacy and elite service for the most refined guests.

Suite features & highlights:

- Multi-Level Layout: A grand master bedroom, living/dining area, private study, kitchenette, and service room
- Elegant Décor: High-end materials, bespoke furnishings, and curated artwork
- City Views: Floor-to-ceiling windows with stunning panoramic views
- Exclusive Facilities: Jacuzzi and luxurious bathroom for ultimate relaxation
- Dedicated Service: 24/7 butler and concierge team
- State-of-the-Art Technology: Smart home controls and high-end entertainment



ROYAL SUITE



ROYAL SUITE

Experience the 885 sq m Royal Penthouse with two grand master suites, sweeping views of Dubai, a private gym, spa-style Jacuzzi, 24/7 butler service, and advanced smart home features.

EXQUISITE STAY

Marriott Marquis Dubai encompasses three towers with a total of 156 serviced apartments. Each tower has its own fitness center and an outdoor swimming pool. All apartments have fully equipped kitchens, spacious living rooms, and some of them have amazing views of either the vibrant city of Dubai or the famous Dubai Creek.



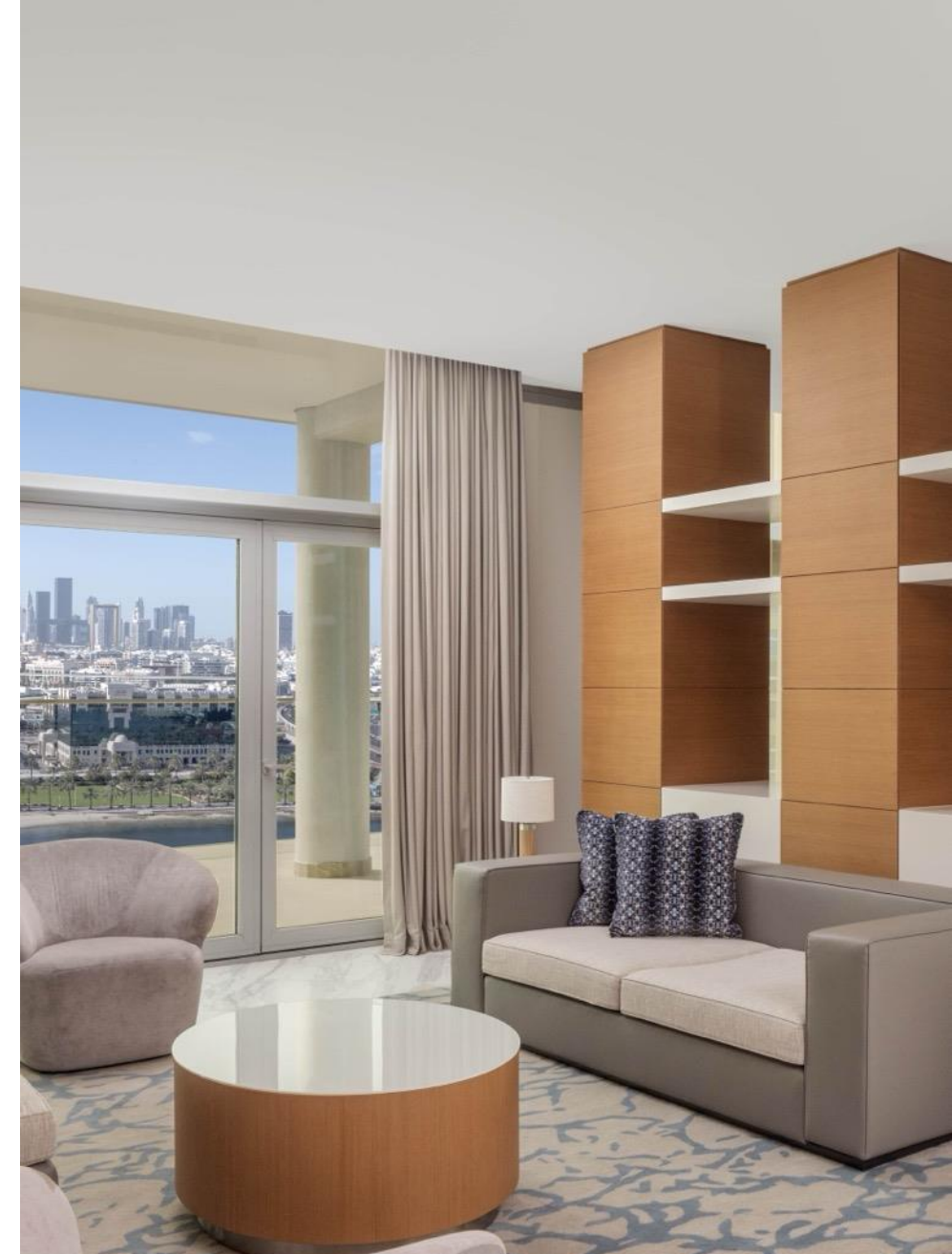
ONE-BEDROOM APARTMENT

Apartment sizes range between 119-121 sqm.



TWO-BEDROOM APARTMENT

Apartment sizes range between 132-140 sqm.





CREEK VIEWS ALL DAY



TWO-BEDROOM DUPLEX APARTMENT

Apartment size is 401 sqm.



THREE-BEDROOM DUPLEX APARTMENT

Apartment size is 357 sqm.



TASTE THE EXTRAORDINARY



CREEK KITCHEN

Creek Kitchen, our all-day dining restaurant, offers international cuisines and live stations.

Delight in the thematic Nautiluna seafood Friday night brunch and Brunchtopia, our family brunch, every Saturday.

TASTE THE EXTRAORDINARY



BELLA BOCCA

Journey into the heart of Italy as you savour authentic, rustic dishes at Bella Bocca! Indulge in handcrafted pasta, stone baked pizza and regional favorites

TASTE THE EXTRAORDINARY



THE COPPERHEAD

The Copperhead is an upscale pub where you can enjoy delicious bar bites and drinks, while you watching favourite sports.

TASTE THE EXTRAORDINARY



RUBY RU BY IRIS

Ruby Ru by Iris is a Parisian-inspired cocktail bar with a 180° skyline terrace, central bar, and chic dining area. Enjoy crafted cocktails, French-Japanese cuisine, and signature events like ladies' night, brunch, and happy hour in a lively atmosphere.

TASTE THE EXTRAORDINARY



BBQ BROS

BBQ Bros is known for its diverse range of barbecue dishes, crafted with the finest ingredients and inspired by traditional grilling techniques from around the world.

TASTE THE EXTRAORDINARY



THE GREAT ROOM

Relax in our elegant Lobby Lounge, a serene spot where you can unwind with a refreshing drink or light snack while enjoying the sophisticated ambiance and welcoming atmosphere of the hotel.



M CLUB

The M Club offers an exclusive ambiance with enhanced privacy, providing complimentary refreshments, business services, and a relaxing space to elevate your stay.

UNWIND & ENERGIZE



Escape to our serene outdoor pool, where sparkling waters and warm sun invite pure relaxation. Lounge, swim, and indulge in handcrafted drinks for the ultimate retreat in comfort and leisure.



Stay energized around the clock in our fully equipped gym, where modern design meets top-tier fitness technology—for a seamless workout, whenever it suits you.



WELLNESS REDEFINED



At Wellbeings Holistic Healing, experience tailored wellness with luxury spa treatments that restore balance and calm. Our blend of organic therapies and advanced technology rejuvenates the body, mind, and soul for lasting peace.



Experience the ancient Hammam ritual with steam exfoliation and luxurious infusions, leaving you cleansed and revitalized while overlooking the Arabian Gulf.

THE FUN STARTS HERE



LITTLE JEWELS

The Little Jewels Kids Corner is a haven for young adventurers, offering a vibrant space to play, learn, and create unforgettable memories. With a variety of engaging activities and entertainment, children can explore their creativity and make new friends in a safe and exciting environment. Parents can relax and unwind knowing their little ones are happily engaged and supervised. Come and discover a world of joy designed just for kids!

LOCAL ATTRACTION

Discover the Gems Around You



DUBAI FRAME

Enjoy stunning views of the city from the Dubai Frame, blending old and new Dubai in one landmark.



AL SEEF DISTRICT

Stroll along Dubai Creek in Al Seef, where heritage charm meets modern shops and cafés.



GOLD & SPICE SOUK

Wander through the traditional Gold and Spice Souks in Deira, where shimmering jewelry and exotic aromas fill the vibrant alleys.

WATERSPORTS *by the creek*

Dive into fun with our exciting range of water sports right here at the hotel. Whether you're gliding across the water in a kayak or your little ones are learning the ropes in our Kids Sailing Class, there's something for everyone to enjoy. Perfect for families, beginners, and adventure seekers alike—come make waves with us!





REFLECTING IDEAS
INTO INSPIRING VISIONS
BY THE CREEK

MEETINGS AND MORE

Cutting-edge conference venues, including a banquet hall, ten meeting rooms, and a boardroom

Overlooking the promenade, Dubai Creek and city skyline.

All venues feature bright natural daylight. Certain spaces feature an attached open-air terrace. The conference floor has its own separate entrance.

Host a business or social event in one of our venues at Marriott Marquis Dubai. With over 1,012 square metres of sun-drenched flexible meeting space that accommodates up to 300 guests at a time, state-of-the-art audiovisual equipment, and impeccable Food & Beverage service, make use of our space to suit your every meeting need.



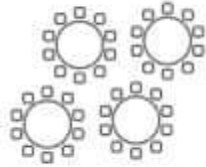
CREEKSIDE CELEBRATION

Celebrate life's special moments in style at our stunning ballroom – M STUDIO, perfect for everything from intimate birthday parties to small weddings. Our spacious ballroom opens up to a beautiful terrace with panoramic views of the creek, offering a serene backdrop for your event.

With personalized service and a setting that combines elegance and charm, your gathering will be an unforgettable experience. From the first toast to the last dance, we make sure every detail is just right.

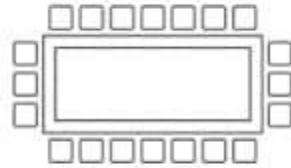


MEETINGS AND MORE



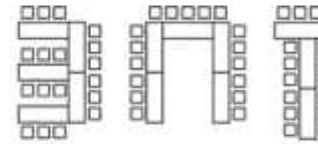
Banquet

Generally used for meals and sessions involving small group discussions. A five foot round table seats eight people comfortably. A six foot round table seats 10 people comfortably.



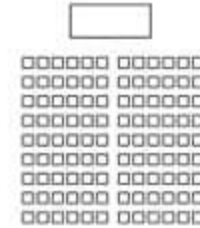
Conference and Hollow Square

Appropriate for interactive discussions and note-taking sessions for fewer than 25 people. Our boardrooms for 10 to 12 people are equipped with full audio visual capabilities, a writing board, cork board and a flip chart.



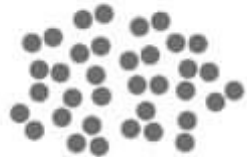
E-Shape, U-Shape and T-Shape

Appropriate for groups of fewer than 40 people. These are best for interaction with a leader seated at the head of the setup. Audiovisual is usually best set up at the open end of the seating.



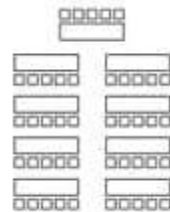
Theater

Appropriate for large sessions and short lectures that do not require extensive note-taking. This is a convenient setup to use before breaking into discussion or role-playing groups because chairs can be moved.



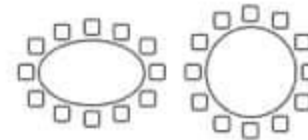
Reception

Stand-up social function where beverages and light foods are served. Foods may be presented on small buffet tables or passed by servers. May precede a meal function.



Schoolroom or Classroom

The most desirable setup for medium to large-size lectures. Requires a relatively large room. Tables provide attendees with space for spreading out materials and taking notes.



Ovals and Rounds

Generally used for meals and sessions involving small group discussions. A five foot round table seats eight people comfortably. A six foot round table seats 10 people comfortably.

MEETINGS AND MORE

CAPACITY CHART

Meeting Room	Dimensions (LxWxH)	Area (sq.ft)	Theater	Schoolroom	Conference	U-Shape	Reception	Banquet
Studio 1	12.0x7.0x3.0	84.0	24	30	20	20	-	36
Studio 2	7.0x6.0x3.0	42.0	24	16	12	12	-	12
Studio 3	7.0x6.0x3.0	42.0	24	16	12	12	-	12
Studio 2 + 3	12.0x7.0x3.0	84.0	40	12	14	12	-	36
Studio 4	7.0x6.0x3.0	42.0	24	12	6	14	-	18
Studio 5	7.0x6.0x3.0	42.0	24	24	14	14	-	12
Studio 4 + 5	12.0x7.0x3.0	84.0	64	24	20	18	-	36
Studio 6	9.0x7.0x3.0	63.0	35	16	12	14	-	24
Studio 7	7.0x7.5x3.0	52.5	24	16	12	14	-	25
Studio 8	17.0x6.3x3.0	107.1	65	28	26	30	-	36
Studio 9	17.0x6.3x3.0	107.1	65	20	26	24	-	36
Studio 8 + 9	12.5x17.0x3.0	212.5	130	48	52	54	60	72
Studio 10	14.0x9.5x3.0	133.0	65	24	25	24	-	36
Studio M	11.0x26.5x3.0	291.5	300	96	50	60	300	180
Studio M1	11.0x12.0x3.0	132.0	110	40	24	24	-	60
Studio M2	11.0x8.0x3.0	88.0	60	30	24	20	-	30
Studio M3	11.0x7.0x3.0	77.0	60	30	24	20	-	30

ADVANCED AUDIO-VISUAL EQUIPMENT

AUDIO-VISUAL EQUIPMENT

- AV Technician
- LCD Panel
- LCD Projector
- Microphone
- Overhead Projector
- TV
- Video Camera

EVENT SERVICES

- Decorator
- Electrician
- Event Lighting
- Registration Service
- Security Guards

EVENT EQUIPMENT & SUPPLIES

- Direction Signs
- Easels
- Flip Chart & Markers
- Pens / Pencils / Notepad
- Podium Lectern
- Portable Stage
- Stack Chairs
- Tables
- Wall Charts

BUSINESS SERVICES

- Computers
- Copy Service
- Fax Service
- Overnight Delivery/Pickup
- Printers



MARRIOTT MARQUIS
DUBAI

Jewel of the Creek, Port Saeed, Deira, Dubai, United Arab Emirates P.O. Box 25113



+971 4-5990000



marriottmarquisdubai.com



@marriottmarquisdubai



Marriott Marquis Dubai